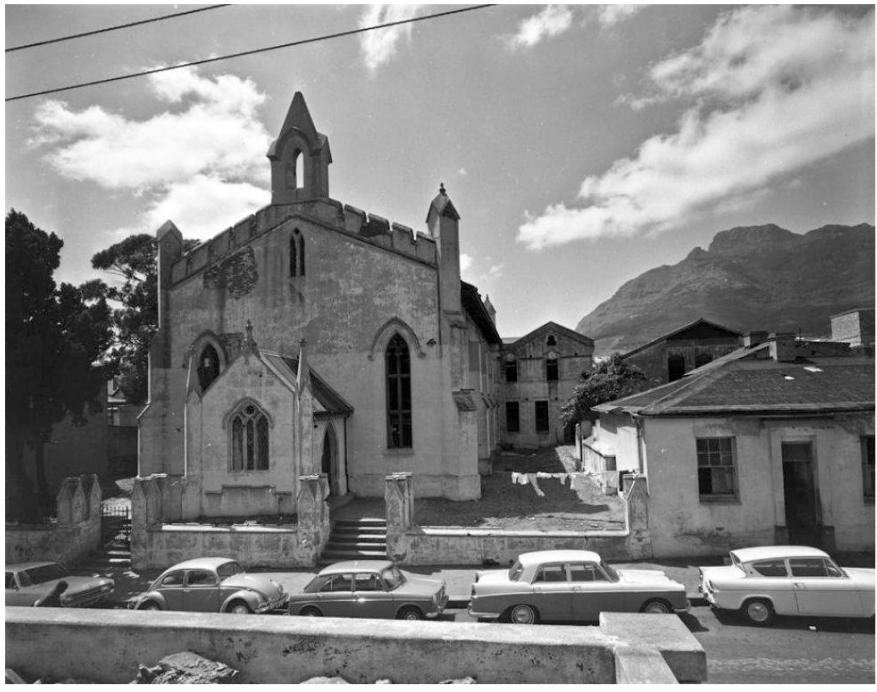


A modern residential & ownership history of **Harrington Square**

Cape Town, Western Cape



Produced by

© **CAPE TOWN PROPERTY HISTORIES**

11 Algoa Road, Milnerton, Cape Town

Jim Hislop – Chief Researcher

Cell: +27 (0)83 950 9586

Email: wheatfields.windmills@gmail.com

Facebook: www.facebook.com/capetownpropertyhistories/

Cover image: courtesy of Martin Greshoff

18 May 2026 (1st Draft)

Contents

1. Introduction	2
1.1 Site description	3
2. Harrington Square in the apartheid era	4
3. Progression of the study area	10
4. Residents/businesses of the streets bounding the square	13
5. Owners of properties bounding the square: c.1955-1973	19
6. Conclusion	24
7. References	26

1. Introduction



Figure 1: Oblique aerial view of the study site (Harrington Square) (Google Earth)

The purpose of this report is to attempt to establish a modern residential and ownership history of the study site, namely Harrington Square, Cape Town.

In order to establish the timeline of this particular site, street directories and ownership records have been consulted.

Where possible, the Deeds Office and other available archival sources have been used.

1.1. Site description



Figure 2: Current aerial survey showing the study site (Harrington Square and surrounds), bounded by Harrington, Caledon, Canterbury and Constitution streets. (Cape Farm Mapper)

The study site – Harrington Square (the surrounding erven have been included) – is situated east part of the Cape Town CBD, bounded by Harrington, Caledon, Canterbury and Constitution streets. It once ‘unofficially’ formed part of the western edge of the neighbourhood known as District Six, although it did not actually fall within the ‘official’ confines of that area; Canterbury Street being District Six’s official western boundary (Picard 1968: 188).

Since the apartheid-era demolitions and forced removals, it is now largely dedicated to parking, but surrounded by a few long-running businesses such as Charly’s Bakery, Woodheads Leather and Dias Tavern Portuguese Restaurant.

2. Harrington Square in the apartheid era

The area bounded by Harrington, Caledon, Canterbury and Constitution streets, and including Glynndale Street

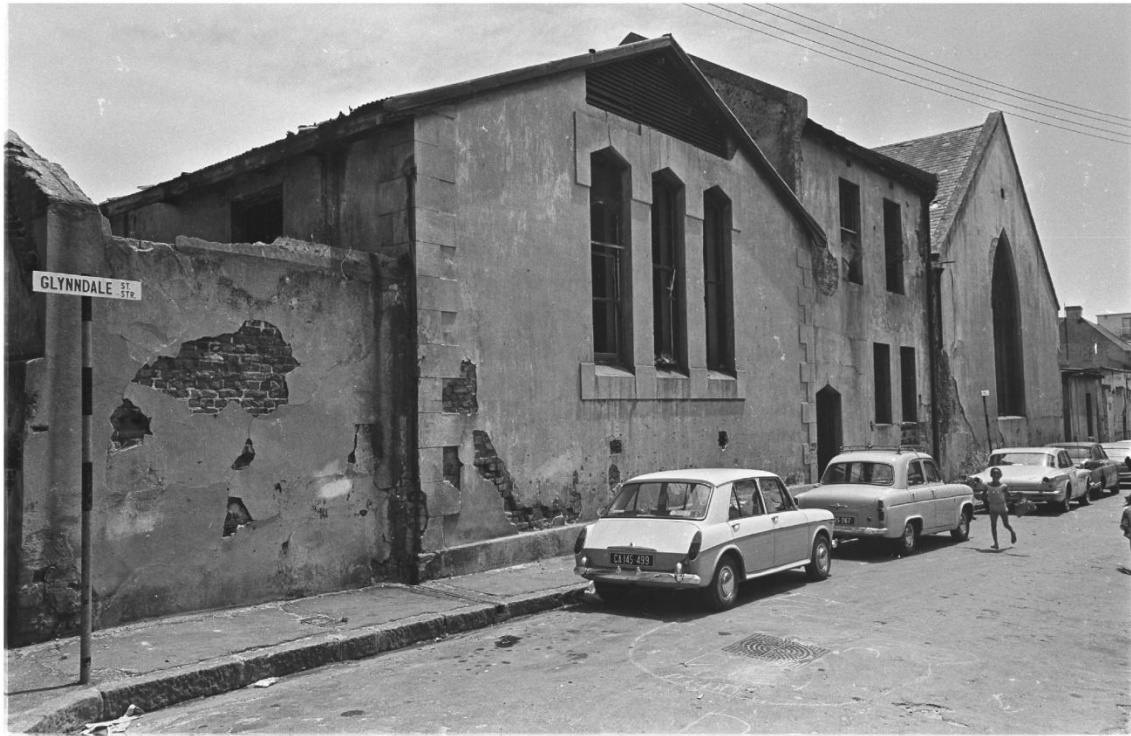


Figure 3: View of part of what was to become known as Harrington Square. Glynndale Street (which no longer exists) bisected part of the square, backed onto by the rear of the Holy Trinity Church. (CoCT Heritage Resources Centre: CCb134_f01_s5_i23)

The purpose of this study is not to provide a complete history of the site, but rather to look at a specific time period, just before, during and just after the area was demolished and residents and businesses moved (or were removed) from the area. Corresponding street directories from 1955, 1965 and 1973 have been consulted, along with the ownership records of that same time period.

Although instances of forced removals of 'non-white' persons had already occurred prior to 1948 (such as 1901 'plague clearances' and forced removals of black dockworkers to Ndabeni); and early 'slum clearances' of the 1930s when Wells Square was demolished in District Six), it was following the National Party's victory in 1948 that would see the formation of much greater, and further reaching racial segregation policies than before. The party's pushing of 'racial separate development' as part of its manifesto was instrumental in bringing the Nationalists to power (sahistory.org.za; Bickford-Smith et al 1999: 149; 156).

The Population Registration and Group Areas acts of 1950 would have dire consequences for those living in racially 'mixed' areas such as District Six. According to Bickford-Smith et al, the former act required that South Africans were now classified according to their race, such as 'White', 'Coloured', 'Asian' or 'Native' (African); while the race legislation involved certain contradictions. The Group Areas Act dictated that there were three main racial groups – 'White', 'Native' and 'Coloured' – rather than the four of the Population Registration Act. This would be amended later to include Chinese and Indian people being declared to be sub-groups of 'Coloureds'. 'Malays' were included in the 'Coloured' group, but 'only if they lived in specific magisterial districts like Cape Town, Simon's Town, Bellville or Wynberg' (Ibid: 157; 158).

The Goad Insurance map of 1949 (Figure 9), completed just before the passing of the 1950 Group Areas Act, shows that by the post-War period, the square itself was a densely built area with the Holy Trinity Church and adjacent school at its heart, with adjoining light industrial buildings, and typical District Six-type tenement houses lining much of the east side of Glynndale Street, interspersed with a printer and electrical goods and tea warehouses between Lamb Lane and Caledon Street.

The 1956 Goad map (Figure 10) shows that little had changed by that time. Perusal of the street directory of 1956-7 reveals that the west side of Harrington Square, between Caledon and Constitution Streets, for example, was then occupied by (No. 41), S.M. Siman & Co.; 45, Sief & Hurwitz (a partnership between George Sief and Abraham Horwitz, listed in the same street directory as a 'general importer' and taken to task by the council for a 'Dangerous balcony over the public footway' around that time); 47, Holy Trinity Church; 49, J.W. Cullen; 51, Mrs A.M. Ireland; 53a was vacant; 55 was occupied by the store of A. Dembo (which the Goad map tells us adjoined a 'garage & box? store'); (57, Harrington Bottle Store; and on the corner of Constitution and Harrington streets at 59a was Harrington Fish & Chips Saloon (Cape Times 1956: 129; 130; 736; NAAIRS).

On the west side of Harrington Street, between Caledon and Albertus Streets, opposite the church precinct, No. 20 was occupied by the East End Hairdressing Saloon, and the Goad Insurance map (Figure 10) shows us that Nos. 22 and 24 were already demolished, while, Nos. 28 to 32 were occupied by B. Gild, a 'leather and grindery merchant, harness and saddlery manufacturer, footwear merchant, manufacturer of tyre sole boots and veldskoene (Cape Times 1956: 130; 504).

The same street directory lists Nos. 3 to 5 Glynndale Street (east side) as occupied by Federal Printing Co.; but does not list the four adjoining tenement houses shown on Figure 10, and occupying Nos. 9 to 15, which suggests that they were already vacant at that time (Cape Times 1956: 119).

Caledon Street's north side, between Harrington and Canterbury streets was largely business premises, Standard Bank of SA Ltd. on the corner of Harrington and Caledon streets, Nos. 27 to 31 being occupied by Arcus Brothers (wholesale cycle tool and hardware merchants); while Nos. 33 to 37 were vacant; and only one private resident, E. Isaacs, lived at No. 39 (Cape Times 1956: 48).

District Six was officially declared a White Group Area on 11 February 1966 under the Group Areas Act. This apartheid policy would eventually result in the forced removal of in excess of 60 000 'non-White' residents from District Six to the Cape Flats by 1982 (District Six Museum). The study block itself, which bordered on District Six, but actually fell just west of the western edge of the district, was declared part of a White Group Area before District Six, in 1965, and by 1971 much of the built fabric of Harrington Square had been demolished (Figure 11).

The street directory of 1965-66, reveals that little had changed when it came to who occupied the various addresses bounding, and on, Harrington Square just before the area was declared as 'White' (pages 15 to 17 of this document).

However, the 1973 street directory (pages 17 to 18) reveals a very different story. In the seven years following the White Group Area declaration, Harrington Street's west side between Caledon and Albertus streets only had a single resident – D. Bank at No. 20 – with no other residents or businesses listed (Cape Times 1973: 161).

On the east side of Harrington Street between Caledon and Constitution streets (on the square itself) No. 43 was occupied by the Simco Building in 1973; Nos. 45 to 55 had no tenants listed, because the Holy Trinity Church and adjacent sites had been demolished; No. 57 was still occupied by the Harrington Street Bottle Store; but No. 59 had no tenant listed (Ibid).

Both sides of Caledon Street were by then solely dedicated to businesses: the north side between Harrington and Canterbury streets still housing Standard Bank of SA Ltd. along with Arcus Bros. (Pty) Ltd. at Nos. 23 to 27 and J. Woodhead & Sons (Pty) Ltd.; Oswald Bros. (Pty) Ltd. and Campcraft Group Sales (Pty) Ltd. occupying Nos. 29 to 37; but No. 39, previously the home of E. Isaacs – who had by then vacated the address – was now occupied by G&P Sales Services (Pty) Ltd. (Ibid: 57).

By this time on the south side of Caledon Street, on the square itself – between Harrington and Canterbury streets – apart from S.M. Siman & Co., Casper Scalabrino & Co. (Pty) Ltd. and American Auctioneering Co. still occupying their business premises, Nos. 64 to 66 were now vacant, and after crossing Glyndale Street, Nos. 84 to 90 were also now vacant (Ibid: 57).

Apart from the increase in vacant buildings, the 1973 street directory reveals that Glynndale Street, whose buildings on its east side were still standing in 1971 (Figure 11) now had no buildings/addresses listed (Cape Times 1973: 148)

Canterbury Street's west side – on the square between Caledon and Constitution streets – now had no buildings/occupants between Nos. 10 (then a store room) and 22 (Donaldson's Express Services), although after crossing the now demolished Glynndale Street, No. 38 was still occupied by M. Beinkinstadt and Nos. 40 to 44 retained The Castle Hotel as a tenant (Cape Times 1973: 61).

Much like Glynndale Street, Constitution Street's south side between Harrington and Canterbury streets – and its north side on the square between the same streets – now had no listings whatsoever (Cape Times 1973: 82).

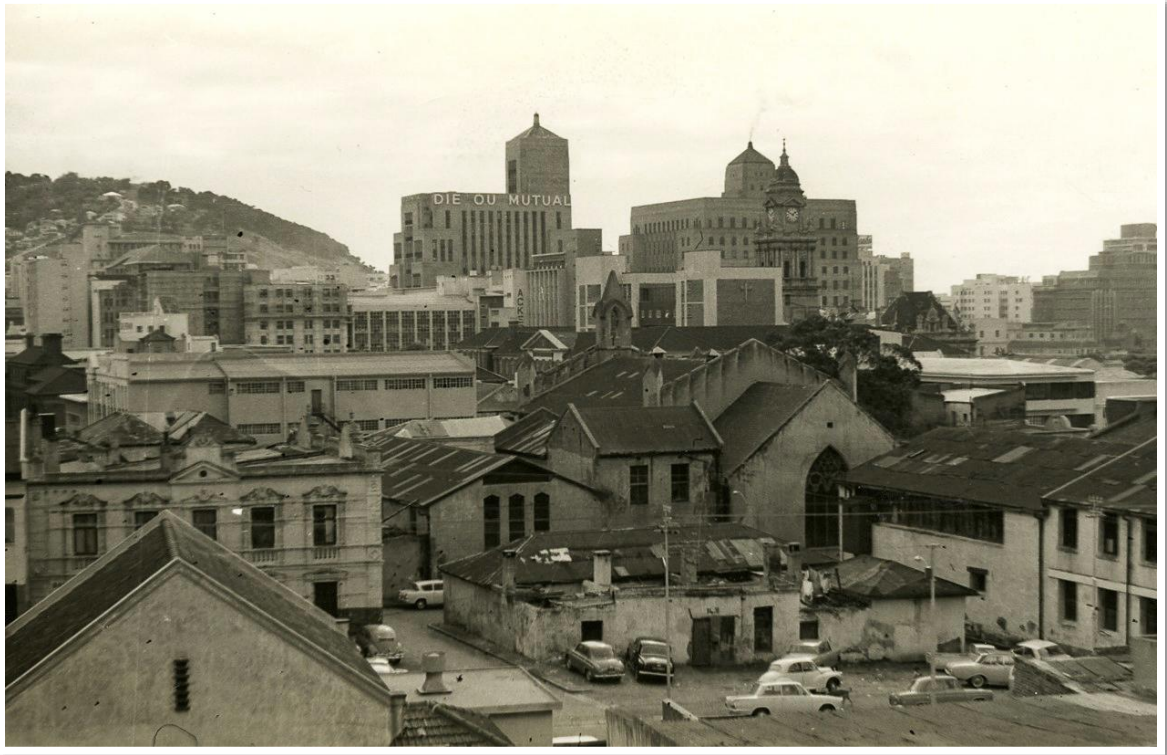
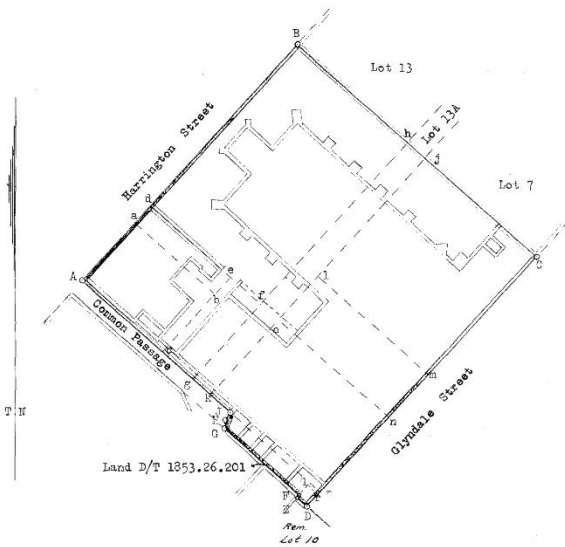


Figure 4: View of Harrington Square, c.1970, showing the back of Holy Trinity Church with Glynndale Street just seen at centre (partially obscured) and Canterbury Street visible in the foreground. It shows the denigration of the square's buildings by this time. (District Six Museum, donated by Jean Melvill)

Description of Beacons.
 A.B.C.D.E.F.G.H.I.J. : $\frac{1}{2}$ " round iron pipe.



Road Interest along Bqs. C.D. closed. Vids. and C. 1910. 28.5.12. File No. 2222, 13. G.D. Date: 3/12/57. Surveyor-General.

SIDES Cape Feet	ANGLES OF DIRECTION	System Co-ORDINATES
AB 126.70	222.20.10	A + 818.31 + 771.75
BC 127.74	311.28.20	B + 732.98 + 578.09
CD 134.30	42.36.10	C + 637.53 + 762.22
DE 5.12	131.13.40	D + 728.49 + 861.13
EF 1.62	219.45.50	E + 732.34 + 857.75
FG 40.16	131.13.40	F + 731.30 + 856.50
GH 3.38	186.17.00	G + 761.50 + 830.03
HI 3.66	206.14.50	H + 761.13 + 826.67
JA 78.38	131.16.20	J + 759.40 + 823.45

No. 5178/59

Approved
 [Signature]
 Surveyor-General.

1. Fig. A.B.C. representing Ptn. 4 of Lot 11 and 17
2. Fig. D.E.F. representing Remr. of Part of Lots 10 and 16
3. Fig. G.H.I. & J.K.L. representing Remr. of Lot 14
4. Fig. M.N.O. representing Portion 12 of Land D/T 1821,5,1
5. Fig. P.Q.R. representing Portion 5 of Land D/T 1840,10,1
6. Fig. S.T.U. representing Portion II of Land D/T 1821,5,1

Scale 1:400
 LOT 5520 CAPE TOWN

The Figure A.B.C.D.E.F.G.H.I.J. represents 16371 square feet of land being LOT H.T.O. and comprises the properties specified above.

situate in the City of Cape Town Province of Cape of Good Hope
 situate in the Division of Cape

Surveyed in June 1957 by me us. & Jan. 1958. [Signature] Land Surveyor.

This diagram is annexed to C.C.T. 1960. 17908. The Original Diagram is annexed to [Signature] Registrar of Deeds. S.G. File No. 9992/13. S.R. No. E. 1167/59. [Signature] Z 311

Figure 7: Facsimile survey diagram of Erf 5520 Cape Town, dated 1957/1958. It shows the Holy Trinity Church precinct making up most of what was to become Harrington Square, with the church footprint shown at top, and the footprint of the rectory seen at bottom. Erf 5520 was comprised of nine component erven.

3. Progression of the study area

Illustrated using Goad Insurance maps and aerial surveys

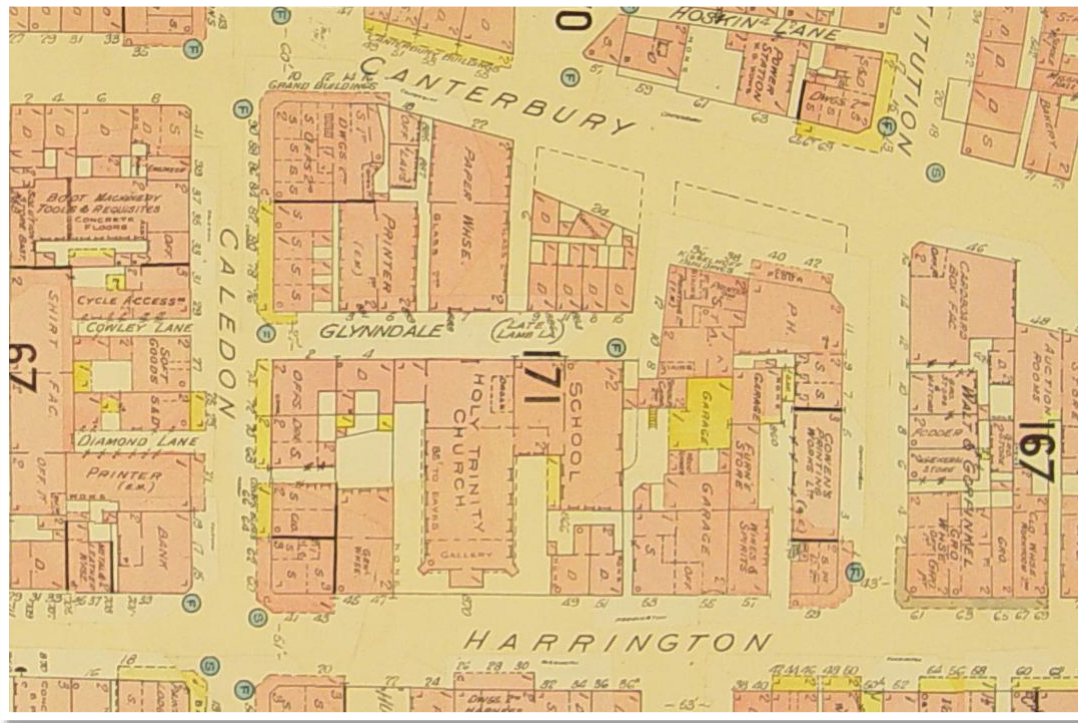


Figure 8: Portion of the 1925 Goad Insurance map (John Rennie Collection)



Figure 9: The 1949 Goad Insurance map showing little changed since 1925. (John Rennie Collection)

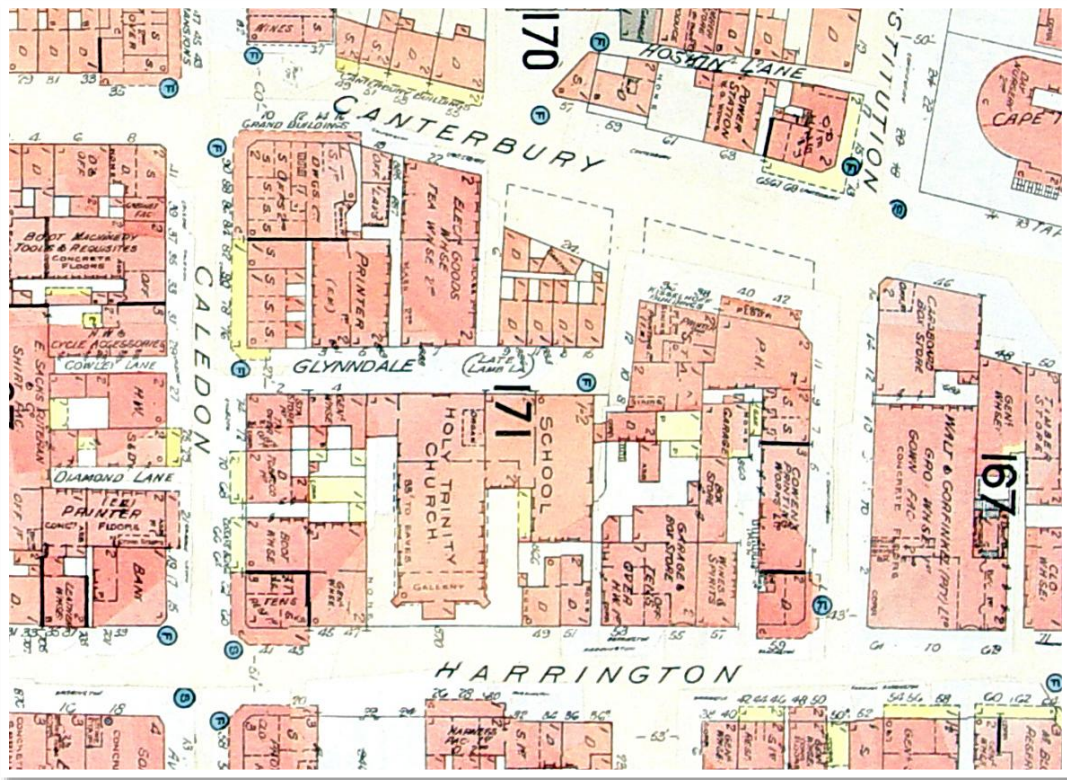


Figure 10: The 1956 Goad map, which corresponds with the 1956 street directory (Rennie Collection)

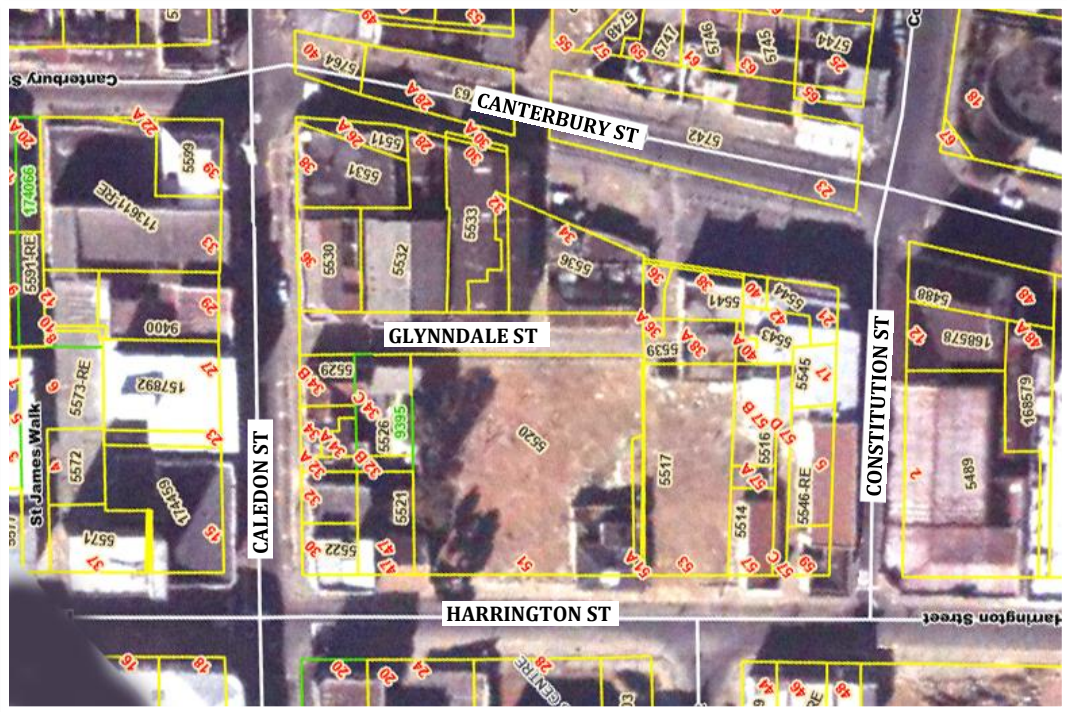


Figure 11: The 1971 aerial photographic survey shows the demolition site of the Holy Trinity Church and school at bottom centre, though the former rectory (by then two semi-detached units) was still standing (close to 51A Harrington Street (bottom centre)). (CoCT Map Viewer, annotations: Jim Hislop)

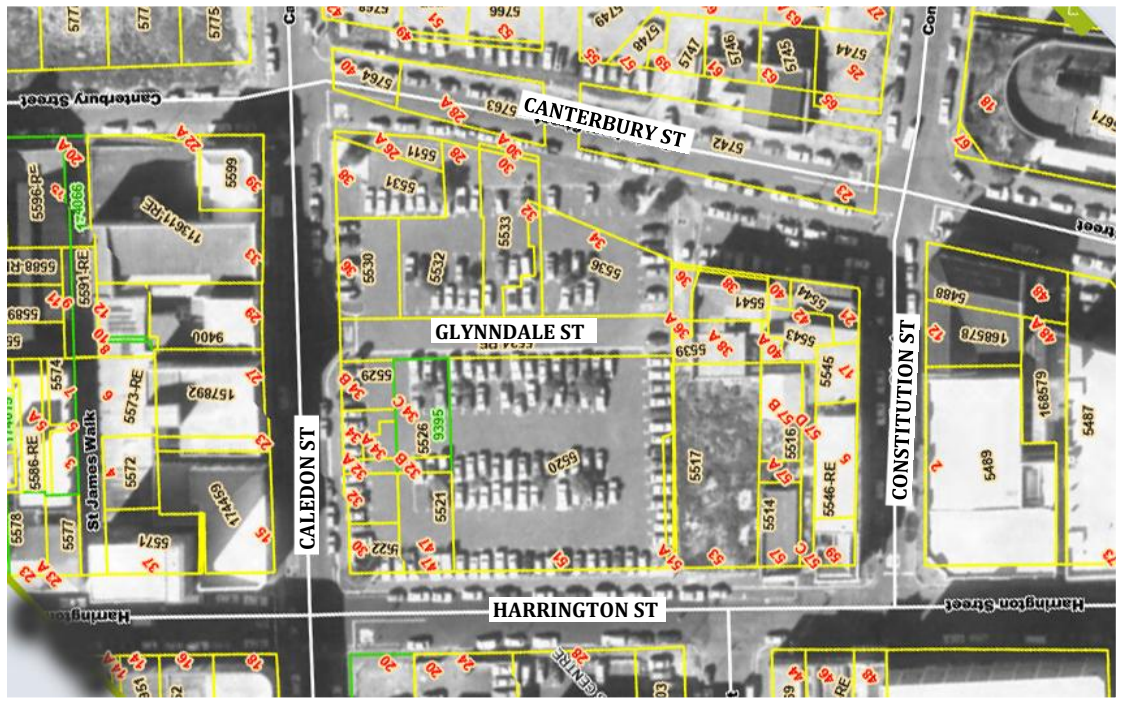


Figure 12: By the time the 1980 aerial photographic survey of the area was completed, Glynn Dale Street and the entire block between it and Canterbury Street (top middle) had been completely cleared of buildings. The former Holy Trinity Church rectory building (now the approximate site of 51A Harrington Street bottom middle) had also been demolished. (CoCT Map Viewer)

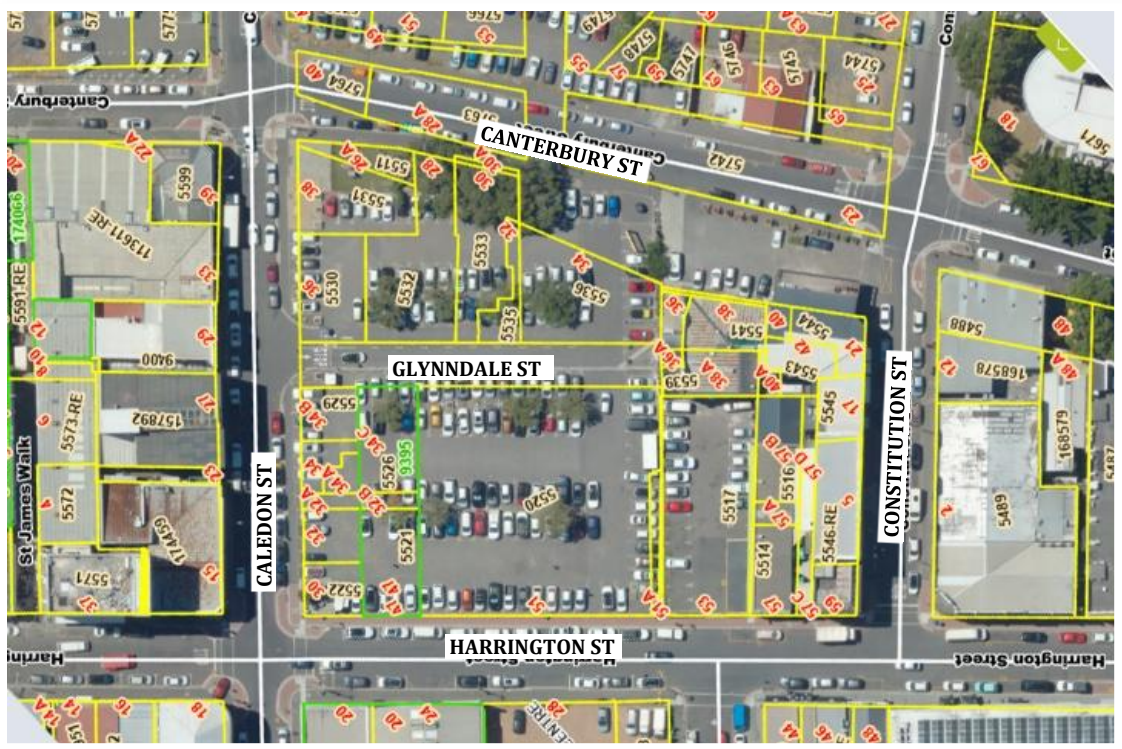


Figure 13: 2025 aerial survey. (CoCT Map Viewer)

4. Residents/businesses of streets bounding the square

Harrington, Caledon, Canterbury and Glynddale streets, taken from street directories of 1956-1973



Figure 14: The back of the church and school seen from Glynddale Street, which no longer exists. (CoCT Heritage Resources Centre: CCb134_f01_s5_i23)

1956-7

Harrington Street (Cape Times 1956: 129; 130)

West side between Caledon St and Albertus St:

20 – East End Hairdressing Saloon

28-32 – B. Gild

East side on Harrington Square between Caledon St and Constitution St:

41 – S.M. Siman & Co.

45 – Sief & Hurwitz

47 – Holy Trinity Church

49 – J.W. Cullen (rectory building)

51 – Mrs A.M. Ireland (rectory building)

53a – Vacant
55 – A. Dembo (store)
57 – Harrington Bottle Store
59a – Harrington Fish & Chips Saloon

Caledon Street (Cape Times 1956: 48)

North side between Harrington St and Canterbury St

No nr. – Standard Bank of SA Ltd.
27-31 – Arcus Brothers
33-37 – Vacant
39 – E. Isaacs
41 – Central Stores

South side on square between Harrington St and Canterbury St

60 – Silver Star Café
64-66 – SA Bias Binding Manufacturers Ltd.
68 – Casper Scalabrino & Co. (Pty) Ltd.
72 – American Auctioneering Co.

Here runs Glyndale St

78 – The City Meat Market Stores
84 – S. Watkin
86 – Castle Printing Works
88 – not listed
99 – Lucky Star Café

Glyndale Street (Cape Times 1956: 119)

West side between Caledon St and Constitution St

No addresses listed

East side between Caledon St and Constitution St

3-5 – Federal Printing Co.

Canterbury Street (Cape Times 1956: 52)

West side on square from Caledon St to Constitution St

10 – Store room
14 – Welcome Boot & Shoe Repairs
18 – Federal Printing Co. (Pty) Ltd.

20 – B. Ginsberg
24 – Not listed

Here runs Glyndale St

36 – Vacant
38 – M. Beinkinstadt
40-44 – The Castle Hotel

East side from Caledon St to Constitution St
No nr. – Sub-station

Constitution Street (Cape Times 1956: 69)

South side between Harrington St and Canterbury St
2 – Bond & Taylor SA (Pty) Ltd.

North side on square between Harrington St and Canterbury St

3-5 – Cowen's Printing Works (Pty) Ltd.
7-11 – Castle Hotel (off sales)

1965-66

Harrington Street (Cape Times 1965: 129)

West side between Caledon St and Albertus St:

20 – Lockat Bros. & Co. (Pty) Ltd.
28-32 – B. Gild

East side on Harrington Square between Caledon St and Constitution St:

41 – S.M. Siman & Co.
43 – Simco Building
45 – Sief & Hurwitz
47 – Holy Trinity Church
49 – Mrs M. Cullen
51 – C. Holt
53a – Store room
55 – A. Dembo (store)
57 – Harrington Bottle Store
59 – Harrington Fish & Chip Shop

Caledon Street (Cape Times 1965: 46-47)

North side between Harrington St and Canterbury St

No nr. – Standard Bank of SA Ltd.
23-27 – Arcus Bros. (Pty) Ltd.
29-31 – J. Woodhead & Sons (Pty) Ltd.
33-37 – Manufacturers Direct Supplies
39-41 – Central Stores Clothing Exchange

South side on square between Harrington St and Canterbury St

60 – S.M. Siman & Co.
64-66 – SA Bias Binding Manufacturers (warehouse)
68 – Casper Scalabrino & Co. (Pty) Ltd.
72-74 – American Auctioneering Co.

Here runs Glynnedale St

78 – The City Meat Market Stores,
Federal Printing Co. (Pty) Ltd.
84 – Samie & Khan
86 – Vacant
88 – Nanucci Limited
90 – Lucky Star Café

Glynnedale Street (Cape Times 1965: 119)

West side between Caledon St and Canterbury St
No nr. – M. Beinkinstadt

East side between Caledon St and Canterbury St
3-5 – Federal Printing Co.

Canterbury Street (Cape Times 1965: 50)

West side on square from Caledon St to Constitution St

10 – Store room
14 – Vacant
18 – Federal Printing Co. (Pty) Ltd.
20 – Duraclean Co.
24 – Donaldson's Express Services

Here runs Glynnedale St

38 – M. Beinkinstadt
40-44 – The Castle Hotel

East side from Caledon St to Constitution St
No nr. – Sub-station

Constitution Street (Cape Times 1965: 67)

South side between Harrington St and Canterbury St
No addresses listed

North side on square between Harrington St and Canterbury St

3-5 – Cape Town Die Stamping Co. (Pty) Ltd.

1973

Harrington Street (Cape Times 1973: 161)
West side between Caledon St and Albertus St:
20 – D. Bank

East side on Harrington Square between Caledon St and Constitution St:

43 – Simco Building
45-55 – No tenant listed (church site demolished)
57 – Harrington Street Bottle Store
59 – No tenant listed

Caledon Street (Cape Times 1973: 57)
North side between Harrington St and Canterbury St

No nr. – Standard Bank of SA Ltd.
23-27 – Arcus Bros. (Pty) Ltd.
29-31 – J. Woodhead & Sons (Pty) Ltd.
33 – Oswald Bros. (Pty) Ltd.
37 – Campcraft Group Sales (Pty) Ltd.
39-41 – G&P Sales Services (Pty) Ltd.

South side on square between Harrington St and Canterbury St

60 – S.M. Siman & Co.
64-66 – Vacant

68-70 – Casper Scalabrino & Co. (Pty) Ltd.
72 – American Auctioneering Co.

Here runs Glynnedale St

76-78 – Federal Printing Co. (Pty) Ltd. (store room)
84-90 – Vacant

Glynnedale Street (Cape Times 1973: 148)

West side between Caledon St and Canterbury St
No listings (street demolished)

East side between Caledon St and Canterbury St
No listings (street demolished)

Canterbury Street (Cape Times 1973: 61)

West side on square from Caledon St to Constitution St

10 – Store room
14 – No listing
18 – Vacant
20 – No listing
22 – Donaldson's Express Services

Here runs Glynnedale St

38 – M. Beinkinstadt
40-44 – The Castle Hotel

East side from Caledon St to Constitution St
No nr. – Sub-station

Constitution Street (Cape Times 1973: 82)

South side between Harrington St and Canterbury St
No listings

North side on square between Harrington St and Canterbury St
No listings

5. Owners of properties bounding the square: c.1955-1973

Erven listed in number order, with addresses approximately as they were shown on the 1944-1966 City Survey. Current street numbers are used where no street numbers are shown.



Figure 15: City Survey map (480 Series) of 1944-1966 showing building footprints with current erven and street numbers overlaid. (CoCT Map Viewer)

Erf 5399	(20 Harrington St, cnr Caledon St)	
Owner:	F.B. Plein Investments (White Group)	T8008, 3.6.1953
	Caledon Street Centre Cape (White Group)	T230, 7.1.1970
Erf 5400	(22 and 24 Harrington St)	
Owner:	Robert John Hopkins	T4364, 5.5.1925
	Merchold Properties	T228, 15.1.1973
Erf 5403	(36 Harrington St, cnr Albertus St)	
Owner:	Eva Plein (born Berlinsky) (White Group)	T484, 13.1.1964
Erf 5488	(No nr – now 48 Canterbury St, cnr Constitution St)	
Owner:	T. Mulvihall & Sons Limited	T7910, 3.8.1938

Erf 5489	(No nr – now 2 Constitution St, cnr Harrington St)	
Owner:	Waltmoor (Pty) Ltd.	T7911, 3.8.1938
	Oswald Bros. Properties (White Group)	T14814, 13.6.1979
Erf 5511	(10-16 Canterbury St)	
Owner:	Provincial Wholesalers	T4990, 11.3.1948
	Berkenmeyer Investments (White Group)	T19453, 29.7.1965
	Expropriated by Municipality of CT	Caveat No. 66, 1969
	Municipality of CT	T12596, 13.5.1970
Erf 5514	(Harrington Square, 57 Harrington St)	
Owner:	Ohlssons Cape Breweries	T5828, 21.7.1899
	Sabre Bottle Stores (White Group)	T33539. 13.2.1971
Erf 5515	(Harrington Square, 57A Harrington St)	
Owner:	Hilie Samuel Dembitzer	T9576, 7.8.1943
Erf 5516	(Harrington Square, 57A Harrington St)	
Owner:	Hilie Samuel Dembitzer	T9576, 7.8.1943
Erf 5517	(Harrington Square, 53 Harrington St - old church rectory)	
Owner:	Hilie Samuel Dembitzer	T9576, 7.8.1943
Erf 5520	(Harrington Square, 47 Harrington St - church)	
Owner:	Holy Trinity Church Harrington Street	T17908, 15.11.1960
	Harcourt Investments	T24880, 23.11.1966
	Expropriated by Municipality of CT	Caveat No. 12, 1969
	Municipality of CT	T30990, 2.11.1971
Erf 5521	(Harrington Square, 45 Harrington St)	
Owner:	George Sief	T12084, 24.8.1948
	Waltben Investments	T7381, 26.4.1966
	Expropriated by Municipality of CT	Caveat No. 36, 1969
	Municipality of CT	T37968, 24.12.1970
Erf 5522	(Harrington Square, 41 and 43 Harrington St, cnr Caledon St)	
Owner:	George Sief	T12084, 24.8.1956
	Anna Johanna Siman (born Kruger)	T12726, 6.9.1957
	Expropriated by Municipality of CT	Caveat No. 22, 1969
	Municipality of CT	T27670, 29.9.1970
Erf 5526	(No nr – now 34C Caledon St)	
Owner:	George Sief	T12084, 24.8.1956

	Waltben Investments	T7381, 26.4.1966
	Expropriated by Municipality of CT	Caveat No. 36, 1969
	Municipality of CT	T37968, 24.12.1970
Erf 5530	(Harrington Square, 76-82 Caledon St, cnr Glynndale St)	
Owner:	Israel J. Hoytowski (sp?)	T373, 23.1.1897
	Expropriated by Municipality of CT	Caveat No. ?
	Municipality of CT	TT14238, 1970
Erf 5531	(Harrington Square, 84-90 Caledon St, cnr Canterbury St)	
Owner:	Provincial Wholesalers	T4990, 11.3.1948
	Berkemeyer Investments	T19453, 19.7.1965
	Expropriated by Municipality of CT	Caveat No. 66, 1969
	Municipality of CT	T12596, 13.5.1970
Erf 5532	(Harrington Square, 1-3 Glynndale St)	
Owner:	Agnes Jenkinson	CF 28-24, 20.2.1915
	Expropriated by Municipality of CT	Caveat No. ?
	Municipality of CT	T 14238, 1970
Erf 5533	(Harrington Square, 7 Glynndale St/20 Canterbury St)	
Owner:	Bertha Padowich (born Beinkinstadt)	T15871, 27.9.1955
	Expropriated by Municipality of CT	Caveat No. 868, 1969
	Municipality of CT	T3521, 21.2.1975
Erf 5536	(Harrington Square, 9-15 Glynndale St)	
Owner:	Bert Padowich	T31, 8.1.1946
	Expropriated by Municipality of CT	Caveat No. 67, 1969
	Municipality of CT	T3522, 21.2.1975
Erf 5539	(Harrington Square, 38A Canterbury St)	
Owner:	Bertha Padowich (born Beinkinstadt)	T15871, 27.9.1955
Erf 5541	(Harrington Square, 36, 38 Canterbury St)	
Owner:	Bertha Padowich (born Beinkinstadt)	T15871, 27.9.1955
Erf 5543	(Harrington Square, 42 Canterbury St – Castle Hotel)	
Owner:	South African Breweries Limited	T1871, 10.4.1900
	Annimax Castle (Pty) Ltd.	T17854, 9.7.1969
Erf 5544	(Harrington Square, 42 Canterbury St – Castle Hotel)	
Owner:	South African Breweries Limited	T1871, 10.4.1900
	Annimax Castle (Pty) Ltd.	T17854, 9.7.1969

Erf 5545	(Harrington Square, 7-9 Constitution St – Castle Hotel)	
Owner:	South African Breweries Limited	T3712, 27.6.1900
	Annimax Castle (Pty) Ltd.	T17854, 9.7.1969
Erf 5546	(Harrington Square, 3-5 Constitution St)	
Owner:	Cowen's Printing Works	T14500, 29.8.1946
	Abe Dembo	T3312, 14.3.1961
Erf 5570	(Caledon St - no nr but now 15 – cnr Harrington St)	
Owner:	Standard Bank of South Africa Limited	T19831, 30.11.1954
Erf 5599	(39-41 Caledon St, cnr Canterbury St)	
Owner:	Jacob Oblowitz	T8446, 23.8.1927
	Harry Mallet (White Group)	T14398, 7.10.1957
Erf 5600	(33-37 Caledon St?)	
Owner:	Sidly Properties	T22080, 31.12.1955
Erf 5604	(23-27 Caledon St)	
Owner:	Jacob Arcus	T3834, 5.4.1943
	Hyman Arcus	T25171, 7.12.1964
Erf 5605	(23-27 Caledon St)	
Owner:	Jacob Arcus	T3834, 5.4.1943
	Hyman Arcus	T25171, 7.12.1964
Erf 5744	(Now 65 Canterbury St)	
Owner:	Secilia Frida Kruss	T1819, 13.2.1920
	Charmaine Kruss Trust (Trustees)	T17335, 26.11.1958
	Exprop. by Comm. Development Board	Caveat No. 534, 1971
	Community Development Board	T437, 12.1.1972
Erf 5745	(Now 63 Canterbury St)	
Owner:	Council of the City of Cape Town	T3004, 1.4.1927
	Property frozen	Sect 15(5) Act 3/1966
Erf 5746	(Now 61 Canterbury St)	
Owner:	Council of the City of Cape Town	T3004, 1.4.1927
	Property frozen	Sect 15(5) Act 3/1966
Erf 5747	(Now 59 Canterbury St)	
Owner:	Bertha Padowich (born Beinkinstadt)	T15871, 27.9.1955

Exprop. by Comm. Development Board Caveat No. 1719, 1970
Community Development Board T21992, 8.9.1972

Erf 5767

(49-51 Canterbury St)

Owner:

Shia Gordon (White Group) T17508, 29.10.1952
Briana Leah Goldberg (born Rochman) T9682, 10.7.1958
(White Group)
Morris Goldberg T18106, 14.7.1965
Property frozen by Comm. Dev. Board Sect 15(5) Act 3/1966
Community Development Board T6450, 14.3.1969

Erf 5768

(92-94 Caledon St, cnr Canterbury St)

Owner:

Philip Diamond T8657, 20.6.1950
Property exprop. by Comm. Dev. Board Caveat 1065/1971
Community Development Board T6267, 12.3.1973

** Question marks used where information is illegible or not known*

6. Conclusion

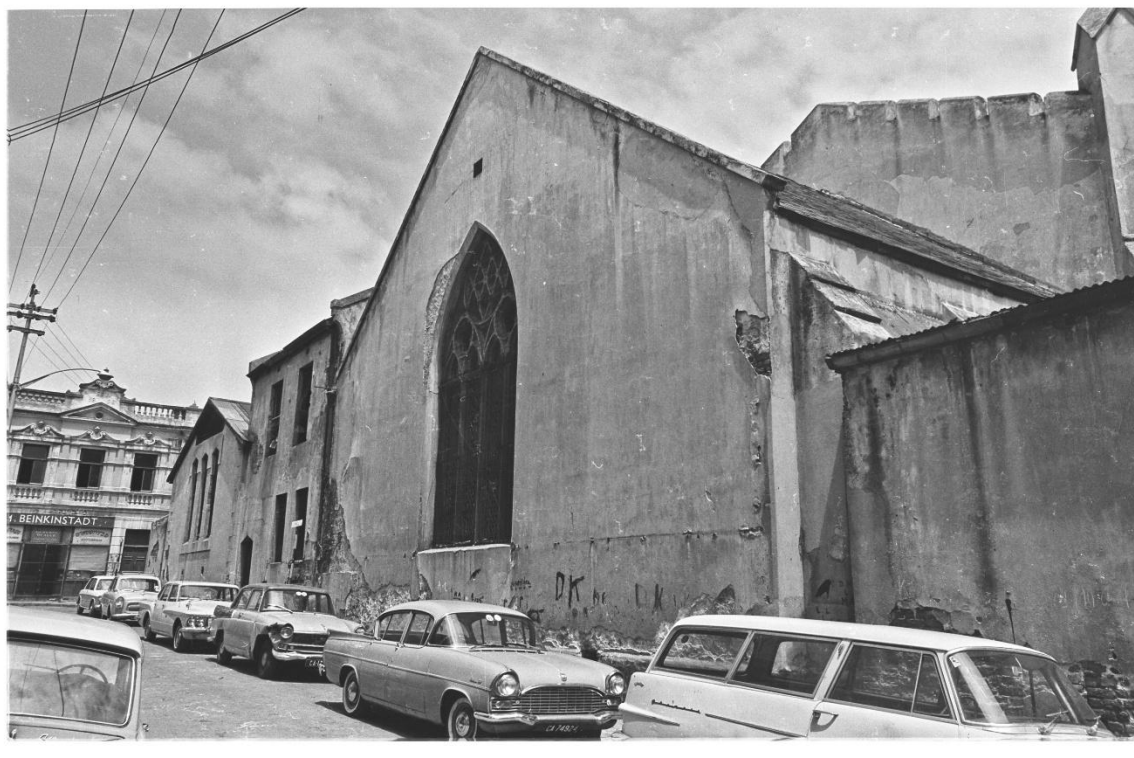


Figure 16 View looking up Glynndale Road towards Beinkinstadt's bookshop, with the rear of the church seen at centre. (CoCT Heritage Resources Centre: CCb134_f01_s5_i24)

Although the study site did not fall within the defined 'official' boundaries of District Six, it was regarded by many as very much a part of this now demolished neighbourhood.

It is apparent from the ownership records that almost all the properties bounding Harrington Square, and on the square itself, were owned by people classed according to the apartheid racial classing system as 'White' during the study period (1955-1973). Judging by some of the surnames, it appears that some of these owners were of Jewish origin.

However, this did not always prevent these owners from being affected by land expropriation, despite the area being proclaimed as a White Group Area. The owners (and residents) affected mostly by these land expropriations were those who owned or occupied buildings that stood within Harrington Square and bounding Glynndale Street, both of which would be demolished by the early 1970s.

In some cases, these owners possessed more than one property in the study area, such as, Hilie Samuel Dembitzer, George Sief and Bertha Padowich (born

Beinkinstadt, being the Lithuanian-born daughter of the owner of Beinkinstadt's bookshop) (Atom.lib.uct.ac.za).

What is also apparent from comparing ownership records with residents listed in street directories of the period, is that in many cases the owner (or a business run by the owner) occupied the building, rather than using it for rental income.

Despite the fact that the study area did not fall within the actual boundaries of District Six itself – which was declared a White Group Area in 1966 and largely demolished between that date and 1982 when the final demolitions occurred – the study area (which was denoted as racially 'Mixed' according to the 1949 Group Areas Map and fell within the rest of the CBD area), was actually declared as part of a White Group Area the year before District Six, whereafter occupation and ownership of land there was restricted to that racial group only.

In addition, the pending forced removal of those who lived in nearby District Six affected the fate of the study block, because despite the fact that it did not fall within the confines of the former area, a large portion of the former residents and non-white-owned businesses would now have been moved out of the area, leading to the buildings becoming vacant and run-down, and resulting in their subsequent demolition following their expropriation in 1969, and subsequent acquisition of the land by the Municipality of Cape Town in 1971.

7. References

Bickford-Smith, Vivian, Van Heyningen, Elizabeth, Worden, Nigel, *Cape Town in the Twentieth Century* (David Philip Publishers, 1999)

Donaldson's Cape Directory (Ken Donaldson, 1927)

Cape Peninsula Directory (Cape Times, 1956)

Peninsula Directories for 1965-66 and 1973 (Cape Times, 1965, 1973)

Picard, Hymen W.J., *Gentleman's Walk – The Romantic Story of Cape Town's Oldest, Streets, Lanes and Squares* (Struik, 1968)

Online references:

Atom.lib.uct.ac.za, accessed from <https://atom.lib.uct.ac.za/index.php/za-uct-bc949-a-a198> on 18 May 2026

Cape Farm Mapper, accessed from <https://gis.elenburg.com/apps/cfm/> on 16 May 2026

City of Cape Town (CoCT) Map Viewer, accessed from <https://citymaps.capetown.gov.za/> on 16 May 2026

Sahistory.org, accessed from <https://sahistory.org.za/article/district-six-declared-white-area> on 18 May 2026

Acknowledgement:

David Hart, City of Cape Town (CoCT) Heritage Resources Centre, for images of Harrington Square